

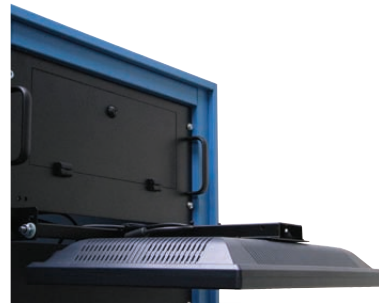
Adjustable Tilt VESA Monitor Mount



**Model Number:
LTMV-101**

The LAN TEK LTMV-101 monitor mount allows easy installation of VESA 100mm mounting hole pattern monitors into 19" EIA equipment racks. The EIA equipment racks can be two post or four post and the monitors can be of any size. The LTMV-101 is manufactured of heavy gauge powder coated welded steel and features easily adjustable friction nuts on each side. The adjustment allows for setting the monitor viewing angle and also allows the monitor to be tilted out of the way to access any equipment which may be mounted behind the monitor.

The LTMV-101 takes only 1U (1.75") of vertical rack space and may be mounted so the monitor tilts in the up or down direction. Mounting the monitor so it tilts in the down direction allows monitors with limited vertical viewing angles to be mounted higher in the rack then tilted down to allow for optimal viewing. If stationary equipment is installed in the rack (does not slide in/out) the LTMV-101 can be mounted directly over the mounting holes on the stationary equipment and thus occupy no vertical rack space.



LTMV-101 Mounted so monitor tilts down.



LTMV-101 Mounted so monitor tilts up.



We offer OEM and custom solutions designed to fit your applications.

Contact us for additional information.

www.lan-tek.net
Tel: 760-364-2900
Fax: 760-364-4997

LAN TEK
1-800-660-2206

lantek@earthlink.net
P. O. Box 549
Yucca Valley, CA 92286